

# TRH-100-FLP

## Battery Powered Temperature & Humidity Indicator



**AMBETRONICS**  
AN ISO 9001:2015 CERTIFIED COMPANY



Magnetic wand

### Features

- 2 Line 4 digit segmental L.C.D display Indication for Temperature, Humidity
- Integrated / Extended Temperature and Humidity sensor connection facility
- Integrated Buzzer for Alarm AL1 & AL2 set points with Acknowledgment facility
- Selectable backlight Blink / Continuous / Off option for alarm
- Software calibration facility
- Password protected programming
- Battery status indication, Low Battery message on display.
- One year battery backup
- Min / Max / Average value indication with Auto / Manual reset function
- Inbuilt Real Time Clock (RTC) in 24 hours format

### Applications

- Clean room application in Pharmaceutical
- Pharma Environments monitoring applications
- HVAC (Heating, ventilation, Air conditioning, Cooling)
- Animal house clean room
- Cold Storage

## TECHNICAL SPECIFICATIONS

### Input

Sensor : Integrated / Extended Temperature and Humidity

### Range & Resolution

Temperature : -20 to 70°C, 0.1 Resolution

Humidity : 0 to 100% RH, 0.1 Resolution

### Accuracy

Temperature :  $\pm 0.5^\circ\text{C}$

Humidity :  $\pm 2\%$  RH

RTC :  $\pm 59$  Seconds / Months

### Indication

Display : 2 Line 4 digit segmental L.C.D display for Temperature / Humidity indication

Status Indication : Alarm indication 'p' on display for AL1 & AL2 common for both Temperature & Humidity

Audio Indication : Integrated Buzzer for alarms set points violation

### Programmable Parameters

Programming of parameters : By using magnetic wand

Sampling interval : 3 to 20 Seconds, User programmable

Offset :  $\pm 10\%$  range of Temperature & Humidity

### Environmental

Operating Ambient . Temp. : -15 to 55°C

Relative Humidity : Below 95% RH, Non condensing.

### Electrical

Supply voltage : 3.7 VDC Lithium Polymer rechargeable battery

Battery backup : Upto 1 Year battery backup with 3 seconds sampling interval

### Flameproof Housing

Protection Class : Ip66

Cabinet Material : Cast aluminium alloy, LM-6

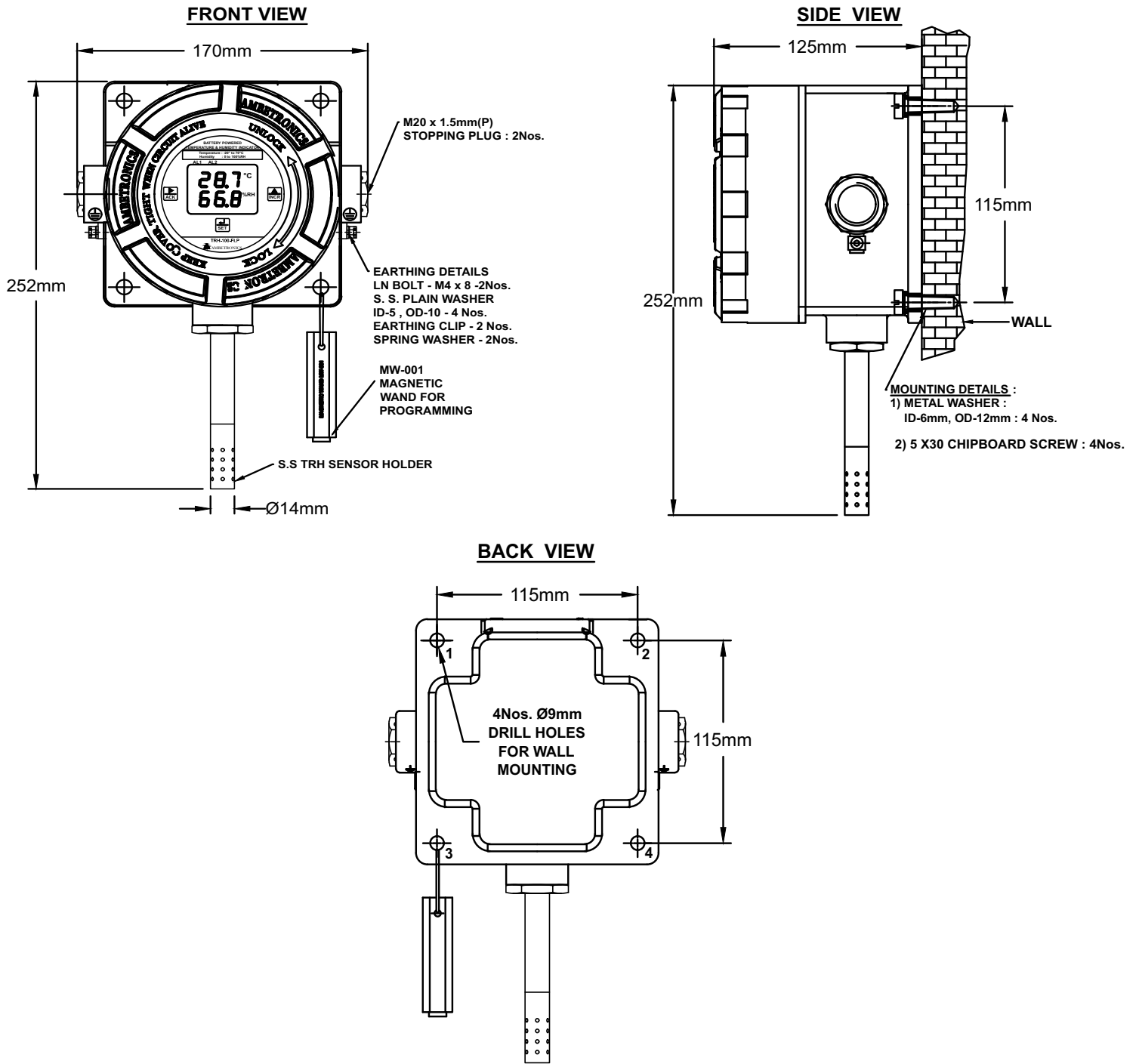
Dimension : 252mm (H) with sensor holder x 170mm(W) with two stopper plug x 125mm(D)

Mounting : Wall Mounting / Stand Mounting

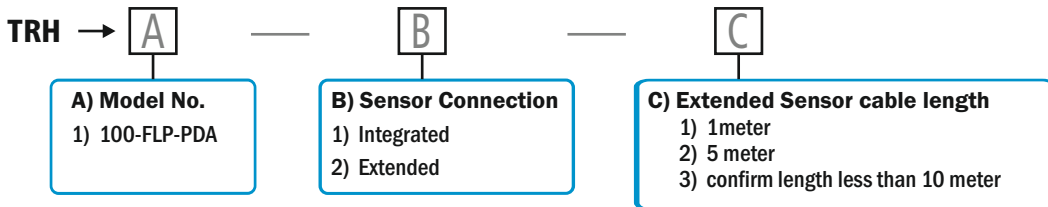
Weight : Approximately 2.2 kg

**YOUR PARTNER FOR CLEAN ROOM MONITORING**

# DIMENSIONAL DETAILS



## ORDERING INFORMATION



NOTE: Select order code e.g. TRH-1-2-2 i.e. TRH-100-Flameproof Enclosure - Extended sensor connection-5meter extended sensor cable length

Manufactured by :



**AMBETRONICS ENGINEERS PVT. LTD.**

17-B, 16, 14A, Tarun Industrial Estate, New Nagardas Road, Mogra Pada, Andheri (E.) Mumbai - 400 069, India.

+91-22-69623389    +91-93207 37646    sales8@ambetronics.com  
 +91-22-61673021/22    +91-91674 18106    sales11@ambetronics.com



Follow us on

Version TRH-100-FLP-PDA-R3-10-02-2024