

TRH-100-WP

Battery Powered Temperature & Humidity Indicator



AMBETRONICS
AN ISO 9001:2015 CERTIFIED COMPANY



Features

- 2 Line 4 digit segmental L.C.D display Indication for Temperature, Humidity
- Integrated / Extended Temperature and Humidity sensor connection facility
- Integrated Buzzer for Alarm AL1 & AL2 set points with Acknowledgment facility
- Selectable backlight Blink / Continuous / Off option for alarm
- Software calibration facility
- Password protected programming
- Battery status indication, Low Battery message on display.
- One year battery backup
- Min / Max / Average value indication with Auto / Manual reset function
- Inbuilt Real Time Clock (RTC) in 24 hours format

Applications

- Clean room application in Pharmaceutical
- Pharma Environments monitoring applications
- HVAC (Heating, ventilation, Air conditioning, Cooling)
- Animal house clean room
- Cold Storage

TECHNICAL SPECIFICATIONS

Input

Sensor : Integrated / Extended Temperature and Humidity

Range & Resolution

Temperature : -20 to 70°C, 0.1 Resolution
Humidity : 0 to 100% RH, 0.1 Resolution

Accuracy

Temperature : $\pm 0.5^\circ\text{C}$
Humidity : $\pm 2\% \text{ RH}$
RTC : $\pm 59 \text{ Seconds / Months}$

Indication

Display : 2 Line 4 digit segmental L.C.D display for Temperature / Humidity indication

Status Indication : Alarm indication '▲' on display for AL1 & AL2 common for both Temperature & Humidity

Audio Indication : Integrated Buzzer for alarms set points violation

Programmable Parameters

Programming of parameters : By using front keys

Sampling interval : 3 to 20 Seconds, User programmable

Offset : $\pm 10\%$ range of Temperature & Humidity

Environmental

Operating Ambient Temperature : -15 to 55°C

Relative Humidity : Below 95% RH, Non condensing.

Electrical

Supply voltage : 3.7 VDC Lithium Polymer rechargeable battery

Battery backup : Upto 1 Year battery backup with 3 seconds sampling interval

Weatherproof Housing

Protection Class : IP65

Cabinet Material : Polycarbonate, Grey Colour

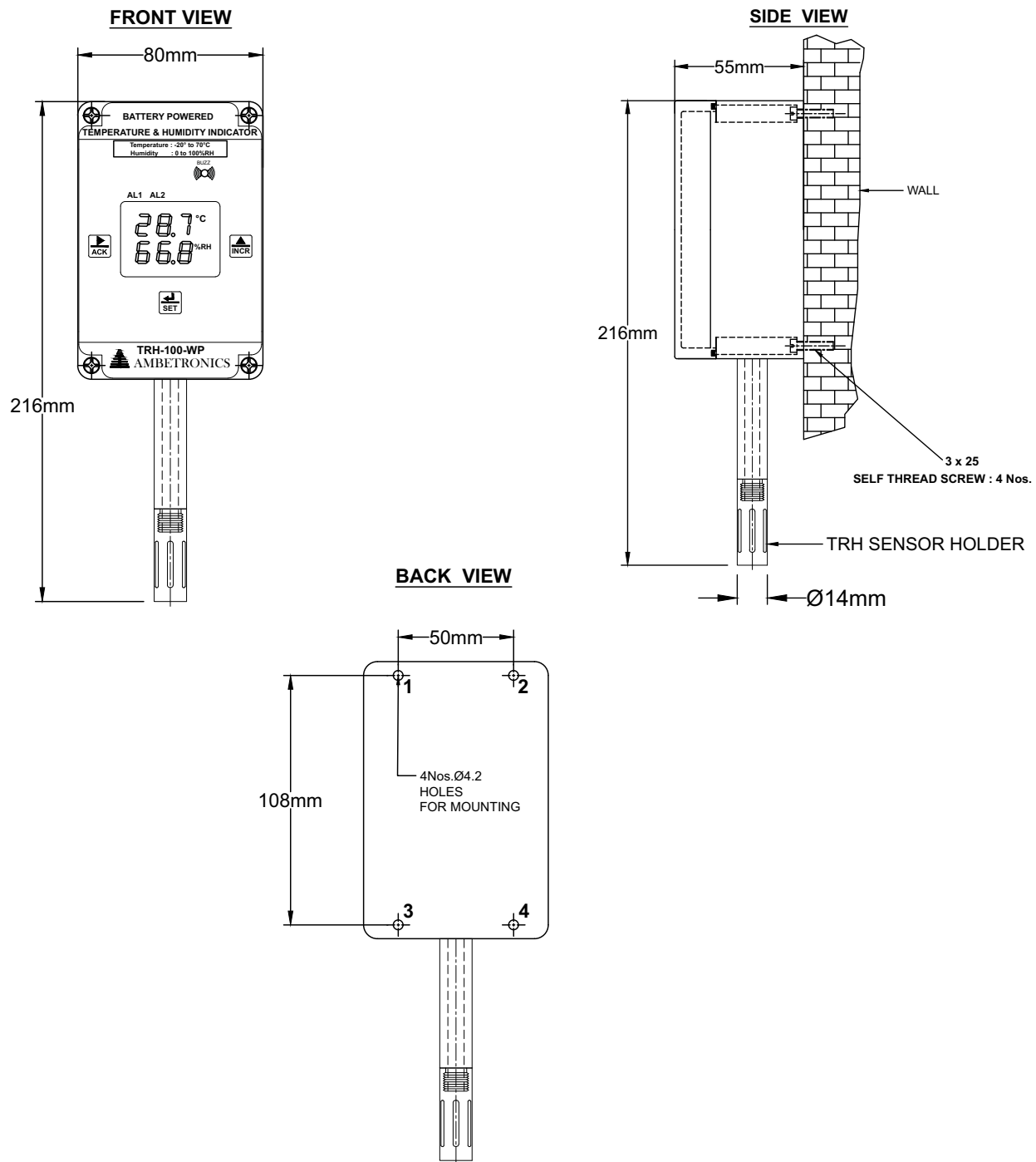
Dimension : 216mm (H) with sensor holder x 80mm(W) x 55 mm(D)

Mounting : Wall Mounting / Stand Mounting

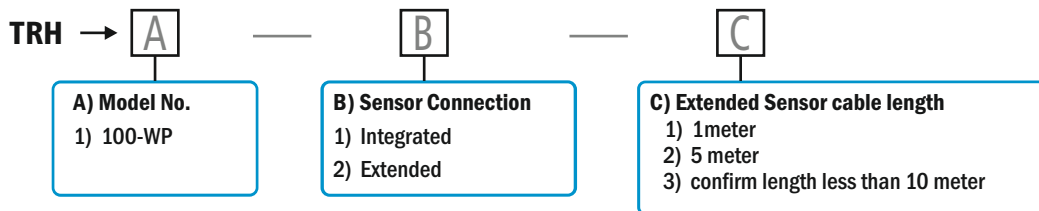
Weight : Approximately 400 grams

Your Partner for Clean Room Monitoring

DIMENSIONAL DETAILS



ORDERING INFORMATION



NOTE: Select order code e.g. TRH-1-1 i.e. TRH-100 - Weatherproof Enclosure - Integrated sensor connection

Manufactured by :



AMBETRONICS ENGINEERS PVT. LTD.

17-B, 16, 14A, Tarun Industrial Estate, New Nagardas Road, Mogra Pada, Andheri (E.) Mumbai - 400 069, India.

+91-22-69623389 +91-93207 37646 sales8@ambetronics.com
+91-22-61673021/22 +91-91674 18106 sales11@ambetronics.com



Follow us on

Version TRH-100-WP-R3-10-02-2023